

**EMIKO<sup>®</sup>**  
**CASE**



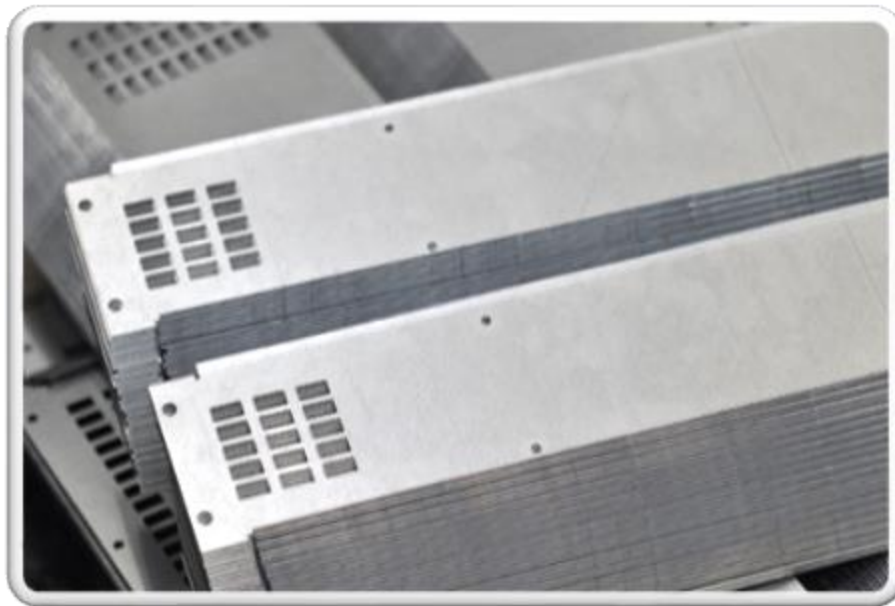
# Welcome in EMKO Case





# We are...

- Czech family company established in 1999
- Market leader for customized solutions of housings for IT and electronics industry
- Developer and manufacturer of our own IT products
- Your partner for mechanical solutions of your system





# We have...

- 2500 m<sup>2</sup> of production space in Brno, Czech republic
- Ability to be flexible
- Target to expand our technologies every year by 1 bigger machine





# Our business field is...

- Development and production of special housings for IT and electronics industry
- Standard industrial cases for Full ATX, Micro ATX, Mini ITX, Pico ITX, Raspberry Pi, BeagleBone etc.
- Production is based on technical documentation
- Related components market







# Customization process...

Placing the order for customized solutions usually goes through following steps:

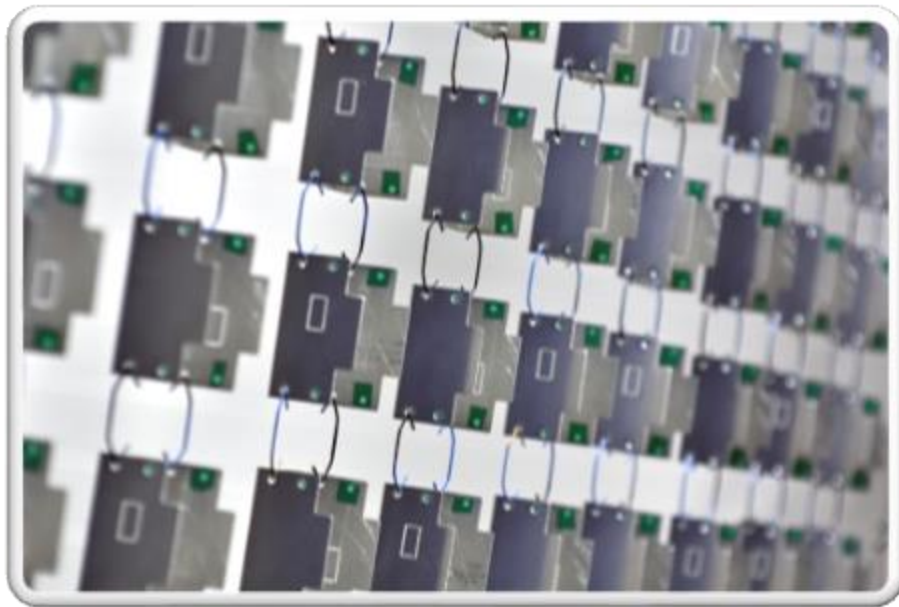
- Receiving a request
- Designing the prototype
- Production of the sample
- Feedback from the customer which can lead to:
  - Possible redesign of the sample
  - Mass production





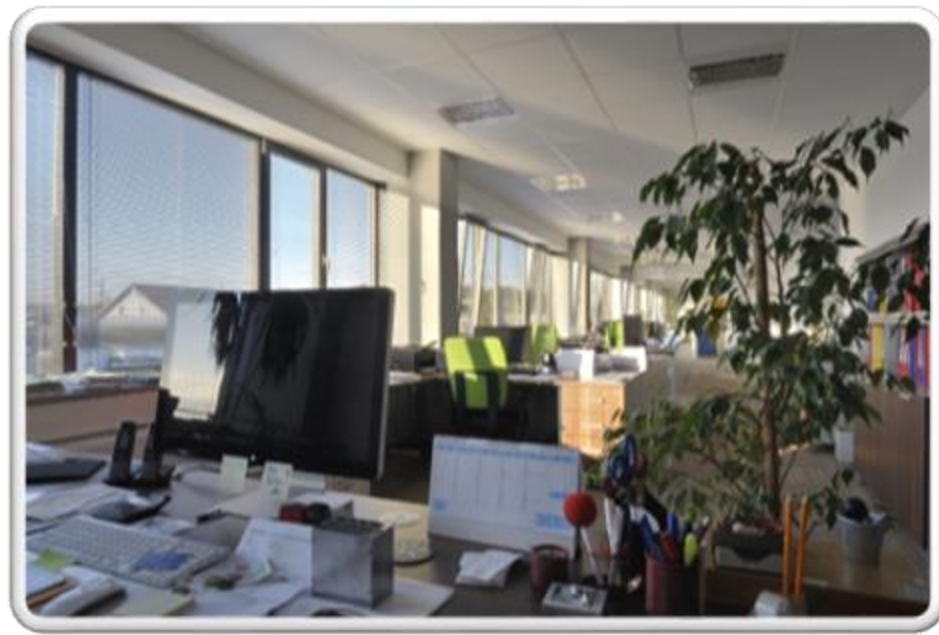
# Standard products...

- Includes wide spectrum of IT cases products (Pico ITX, Nano ITX, Mini ITX, Micro ATX, Raspberry Pi, Beaglebone and more. )
- Most of the time all parts needed for production of any standard product are in our stock, so it is possible to execute common orders (1–20pcs) in **20 days** after order receiving





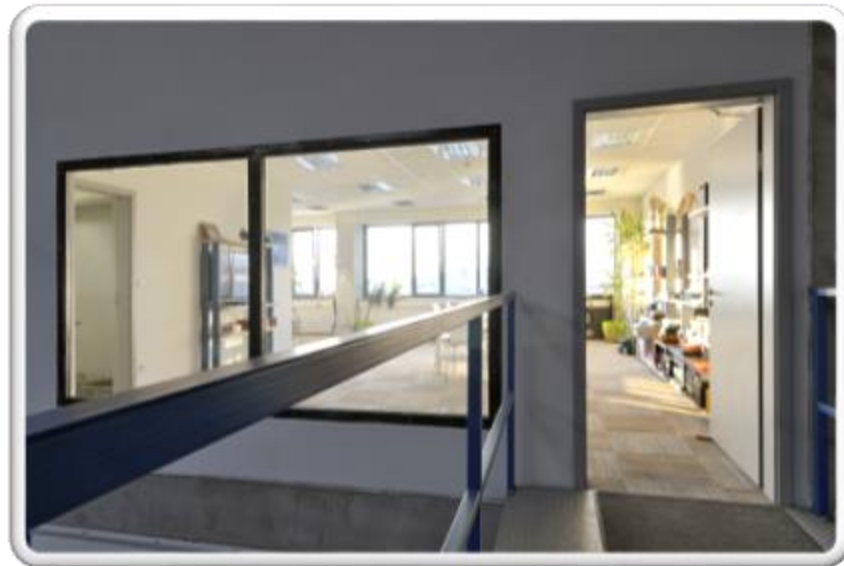
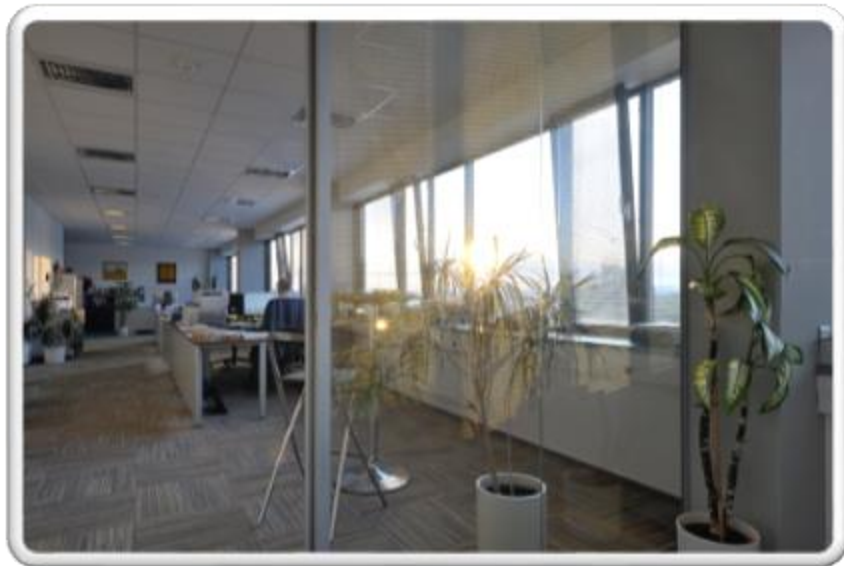
# Office area...







# Office area...





# Be E(M)KO!

- Since 2023 we have solar system on the roof of our company
- During the sunny days we are able to cover 100% electric power only with our solar energy!
- At all we have 340 panels which can produce more than 1 MWh per day!
- Producing with us you are maintaining an environmental friendliness





# Our technology...



Trumatic 200 R



TruPunch 2000





# Our technology...



- Fully automated punching machine with easy to operate touchpoint HMI

**TruPunch 3000 - automated**







# Our technology...



**Trumatic Trubend 5130**



**TrumaBend V 50**







# Our technology...

- Ergonomic high-speed bending machine (small and medium-sized parts).

**TruBend 7036**





# Our technology...

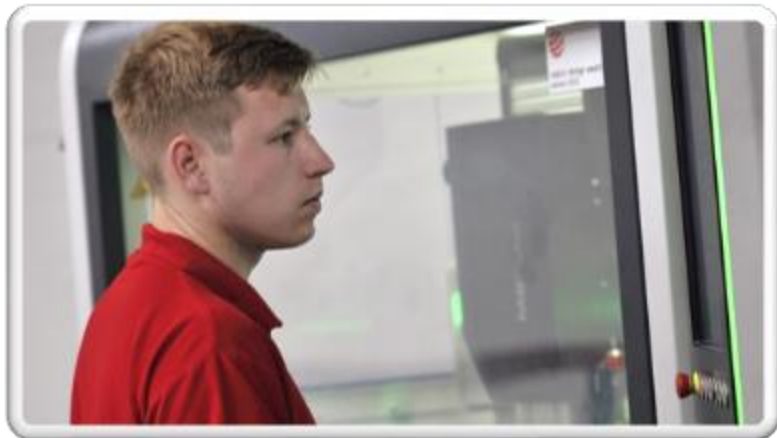
## Datron Cube M8

- Milling centers for front panels, small components, or even difficult products in one piece. Stability is ensured by the solid polymer concrete table





# Milling with the best technology...

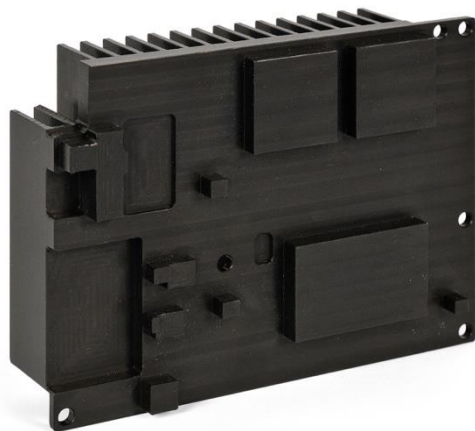


- The machines are equipped with high RPM spindle
- Toolbox has 15 positions for automated tool change





# Our technology...



Datron Cube M8 products







# Our technology...



**Spot - welding**



**Stud - welding**







# Our technology...



Deburring / Brushing





# Our technology...



Standoffs insertion





# Our technology...



- Semi – Automated powder coating line
- Maximum coated profile 2 x 1 x 0,45 m





# Our technology...



**Semi - Automated powder coating line**







# Our technology...



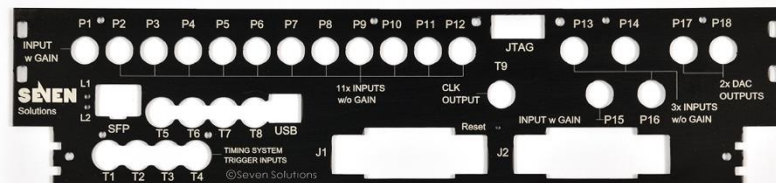
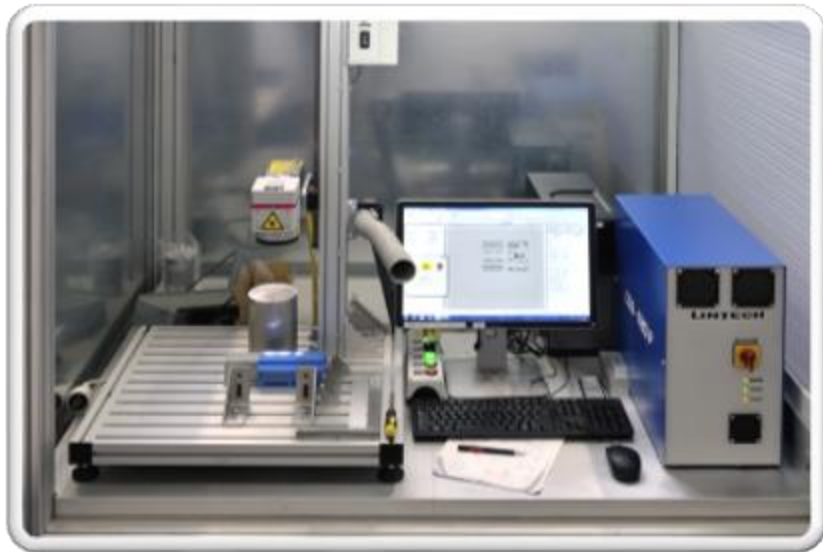
**Semi - Automated powder coating line**







# Our technology...



Laser marking machines - LINTECH





Laser marked products





# Our technology...



UV printer - MIMAKI





# Assembly line







# Worldwide customer base





**Enjoy presentation of our  
products**

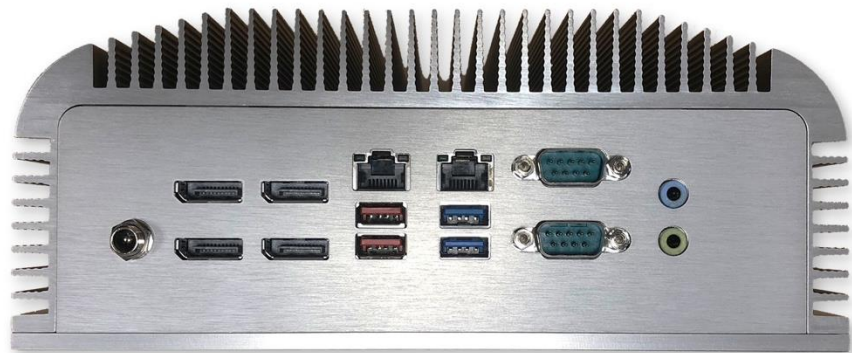












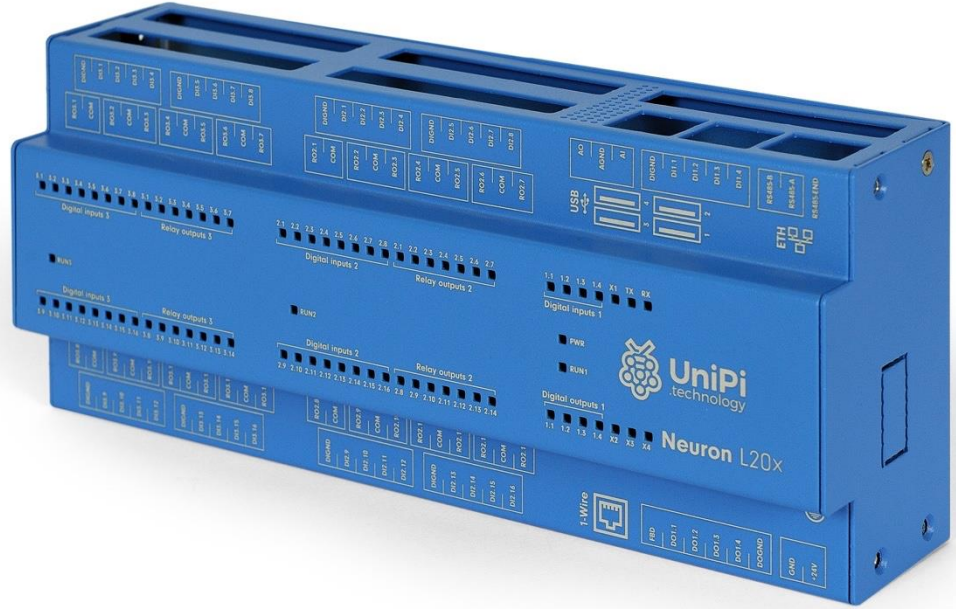
















You can visit us at our stand on  
shows listed below:





# Our vision is...



## To help our partners to grow!



For more information visit  
our website



[www.emko.cz](http://www.emko.cz)

